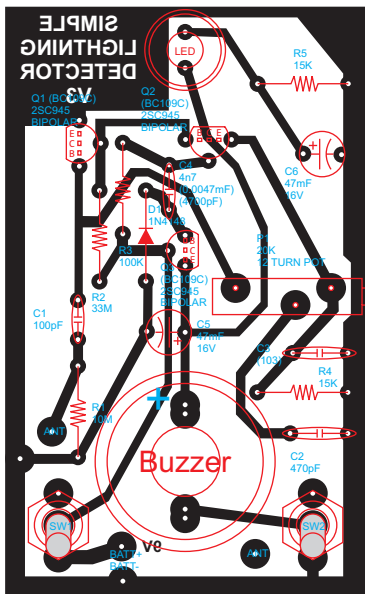
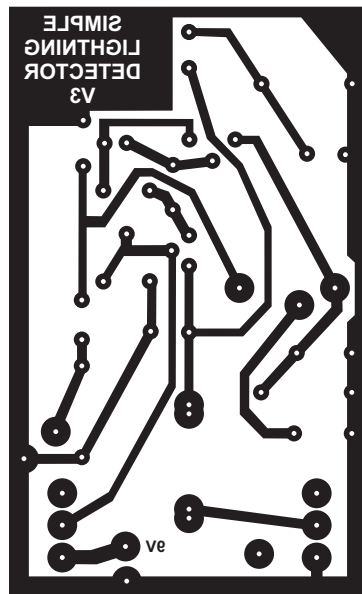


SIMPLE LIGHTNING DETECTOR

Original: <http://electroschematics.com/1021/lightning-detector/>

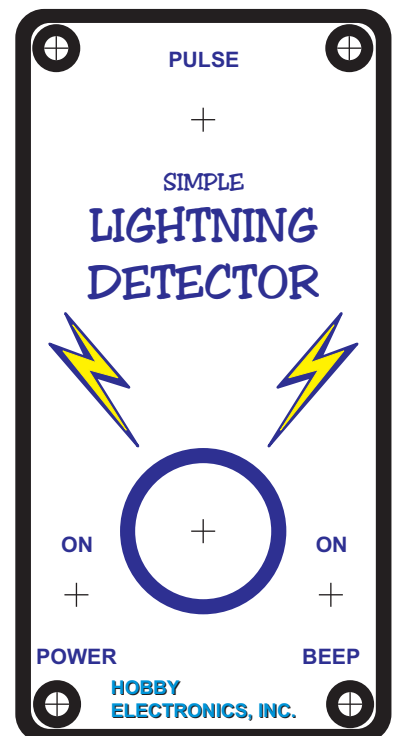


PARTS LAYOUT



BOTTOM VIEW

UPDATED LABEL

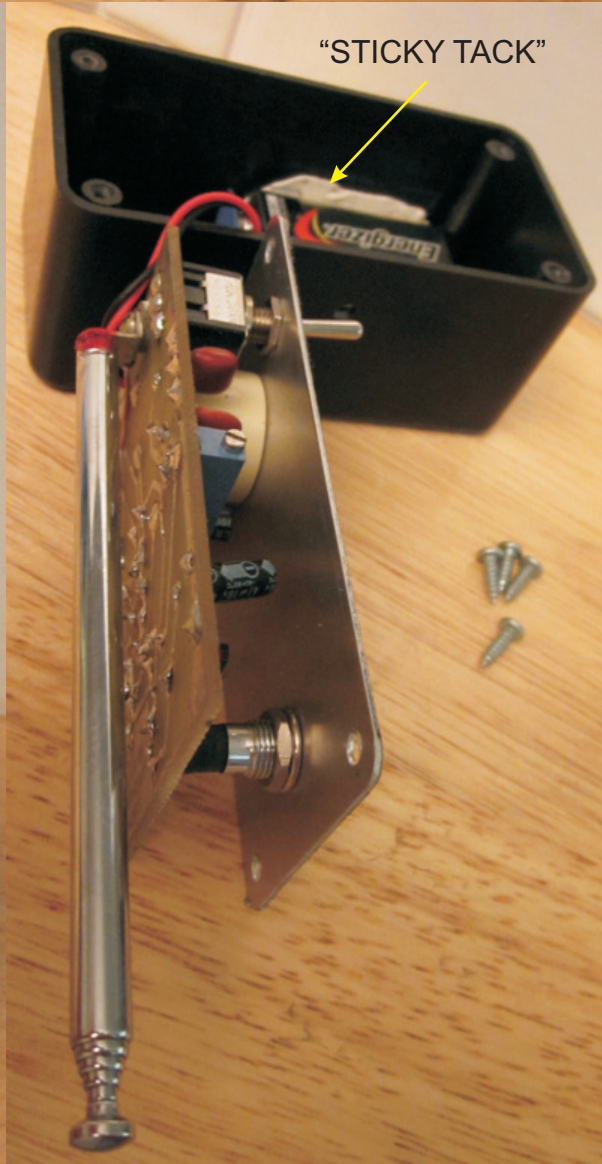
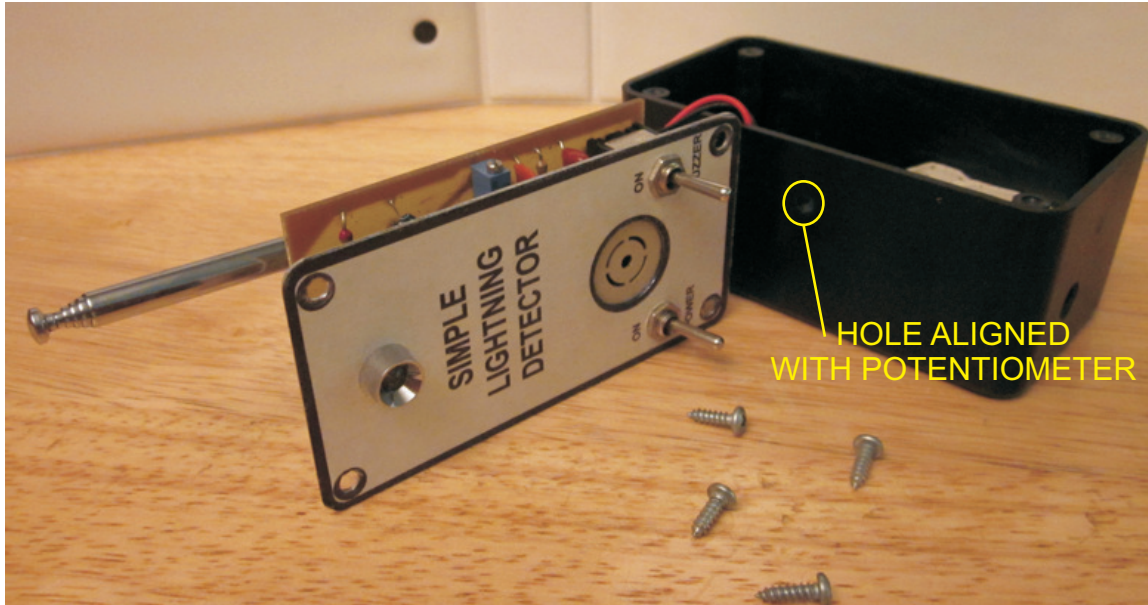


Before I discovered TECHLIB.COM, I built this unit. The first one didn't work well because the components were too close together. The second one had a mistake in the trace (the one in the photo), but it works good corrected. I use it along with Charles Wenzel's designs.

The adjustment is fussy because it is based on an oscillating circuit and often needs tuning. The telescoping antenna aids fine tuning by adjusting its length.

It is a fun unit.

Hobby Electronics, Inc. is my fictitious company. One can always dream!



When appropriate, I like to use PCB mounted switches to secure the PCB in the box.