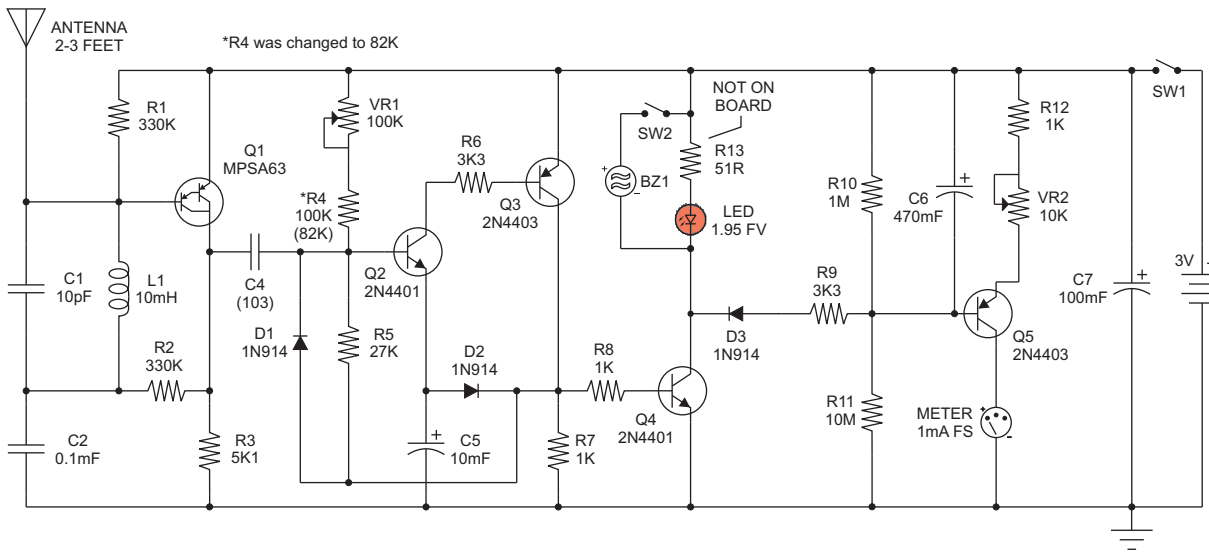


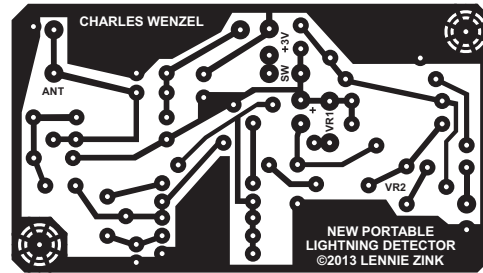
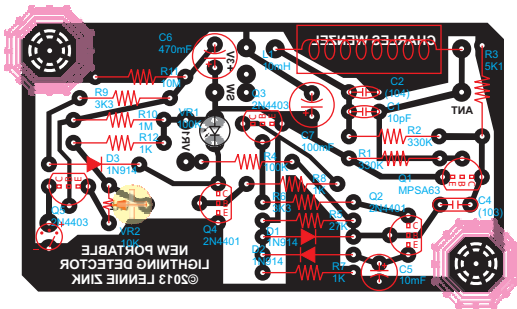
NEW PORTABLE LIGHTNING DETECTOR with ACTIVITY METER



The meter section was changed considerably from the original values for some components. The VU meter is not linear and needs a greater "punch" to get it to full scale. This type of meter makes the readings very sensitive in the mid-scale range and less in the high-end range.

COMPONENT LAYOUT

BOTTOM VIEW



©2013
Lennie Zink

Project Details:

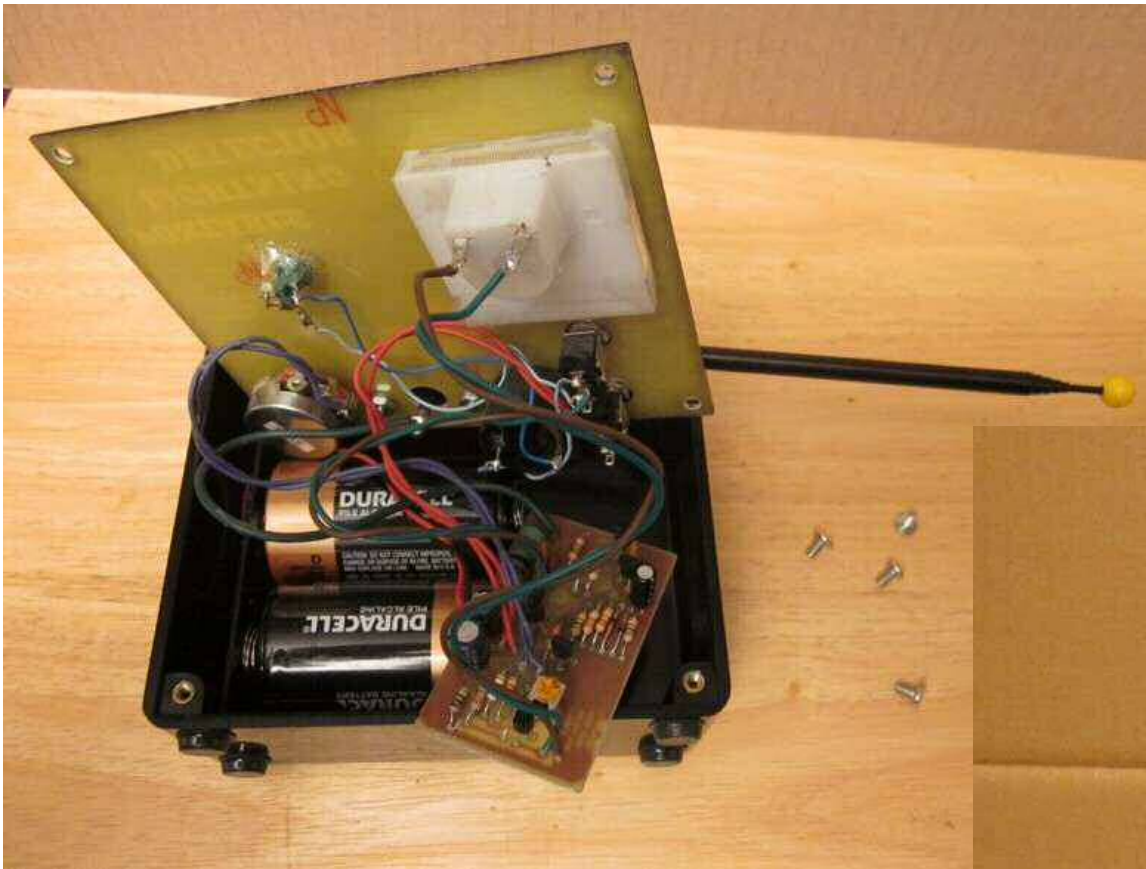
The detector runs off 2 D size batteries. These give the detector a nice heavy feel and long battery life. Care must be taken on the placements of components. In the first attempt, the meter rested on top of the battery, interfering with the placement of the panel. A blank PC board was used to replace the original panel and the meter was moved towards the right.

A VU meter was converted to a volt meter indicating the severity of the detected discharges. The 1mA meter was chosen for its minimum current draw at full scale, allowing longer battery life.

The LED is from a Christmas light string. It can easily be seen from almost any angle. The socket was discarded and the LED holder was glued into a tight-fitting hole.

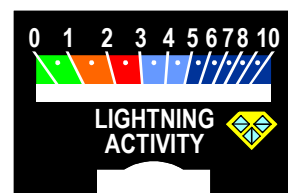
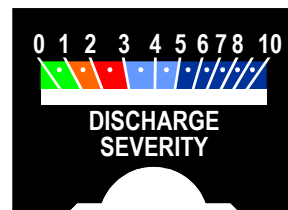
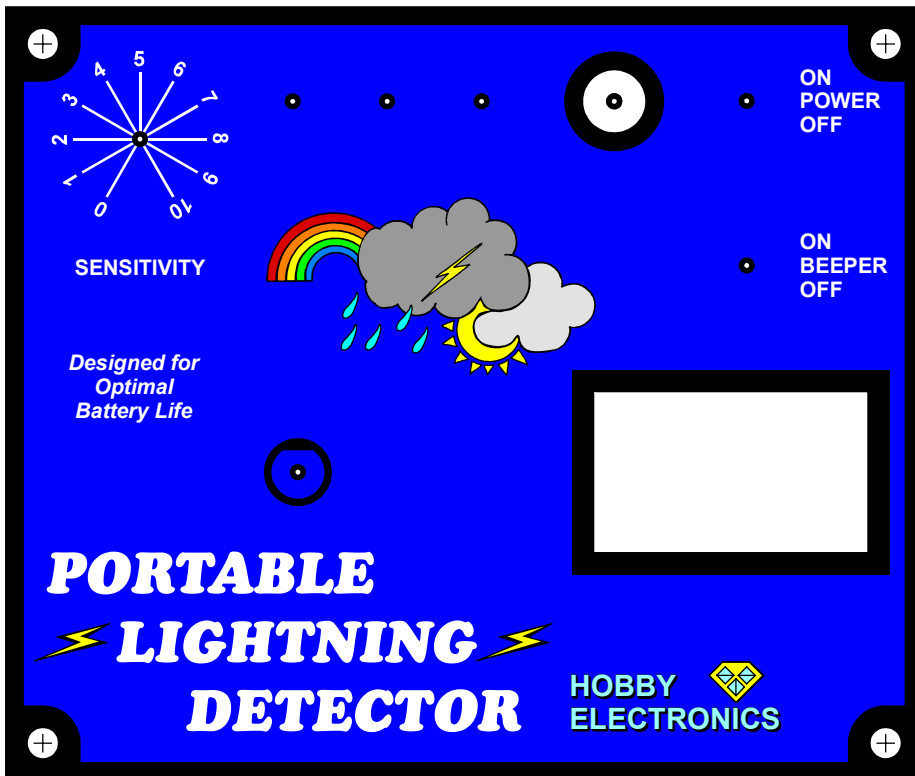
The combination of the project box and movable antenna allows the detector to stand upright or lay on its back for greater flexibility. It is ideally suited for mobility.

This unit was designed to be left powered on at all times, if so desired.



©2013
Lennie Zink

LABEL



©2013
Lennie Zink

