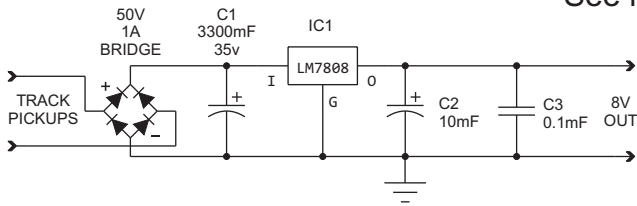


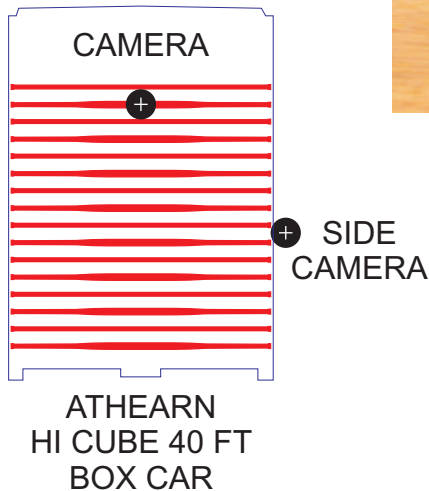
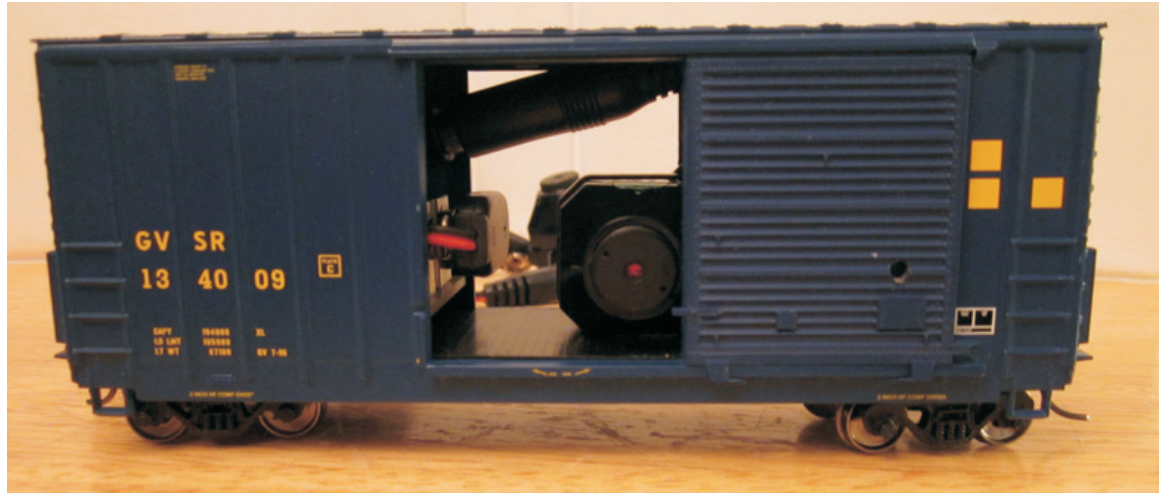
See my "Model Railroad Vacuum Cleaner" project for more details.



©2013
LENNIE ZINK

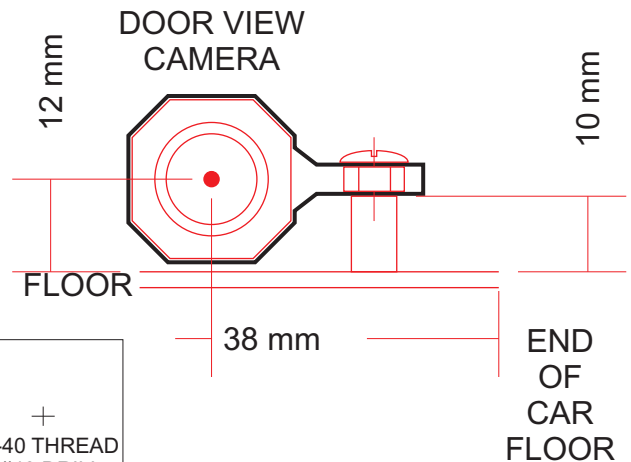
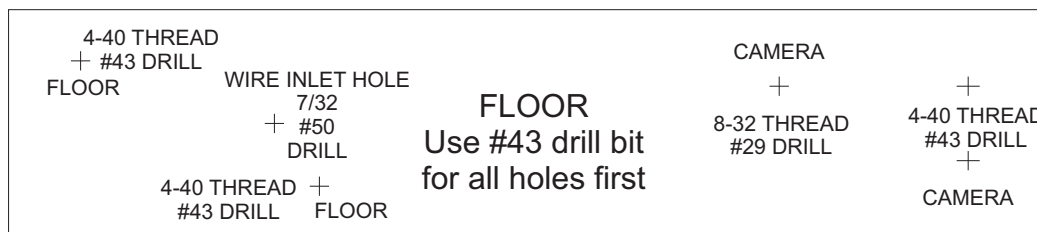
RAILROAD VIDEO CAR POWER SOURCE

DCC is a must for this car to work!
Note: The heatsink runs hot. Don't try to supply 2 cameras.



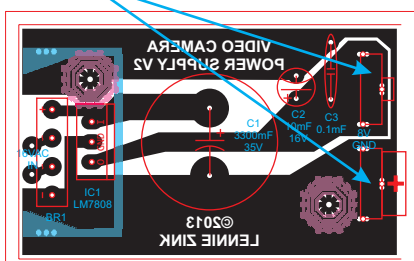
DO NOT SCALE TO PRINT

Print template and adhere to particle board block. Cut/sand to template size.



The FLOOR template is used for both the Vacuum and Video Camera cars.

DIGIKEY
593K-ND &
594K-ND

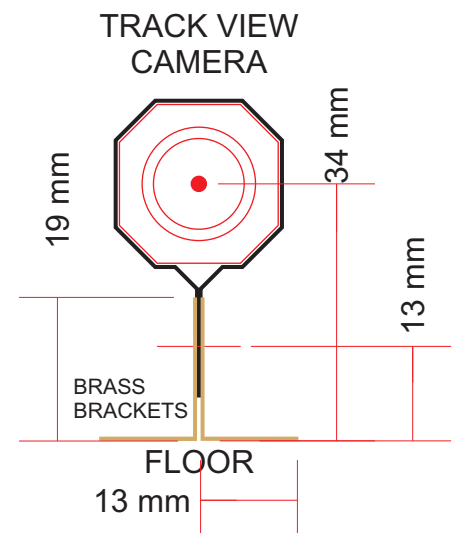


COMPONENT
LAYOUT



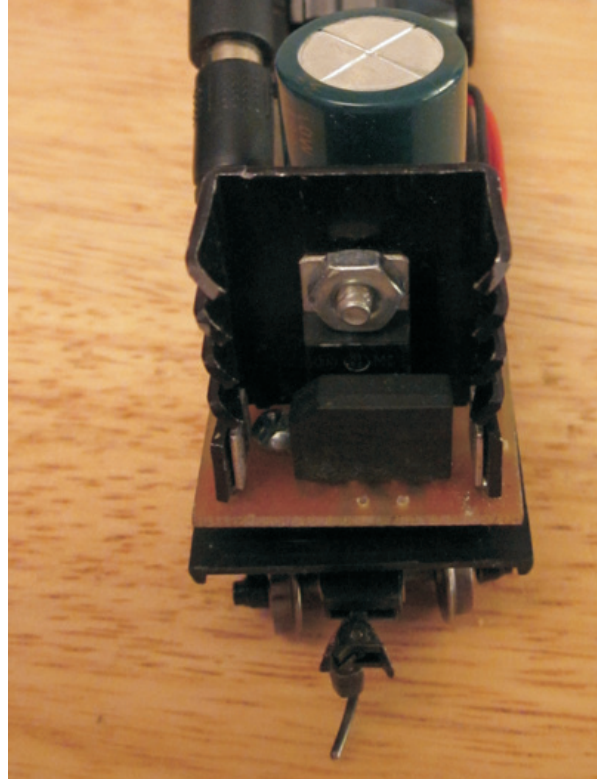
BOTTOM
VIEW

High
capacitance
helps
maintain
power over
"bumps".



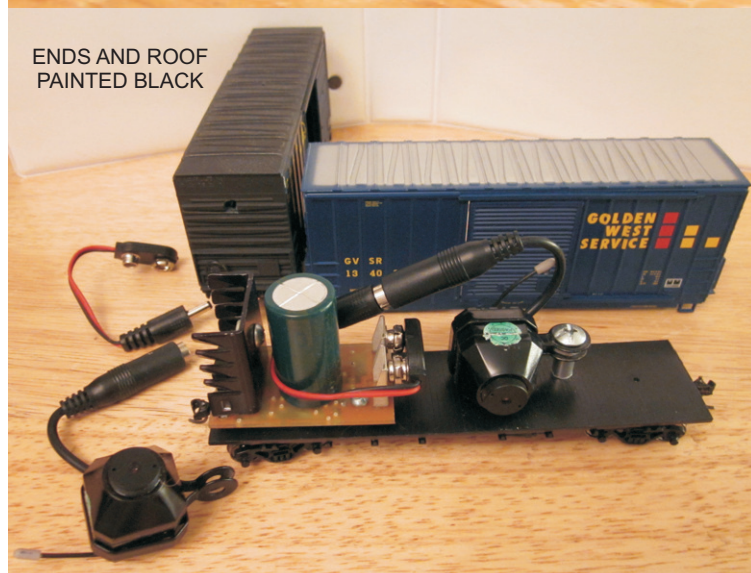


©2013
LENNIE ZINK





ENDS AND ROOF
PAINTED BLACK



©2013
LENNIE ZINK

CAR FLOOR
IS DRILLED
AND
TAPPED

